

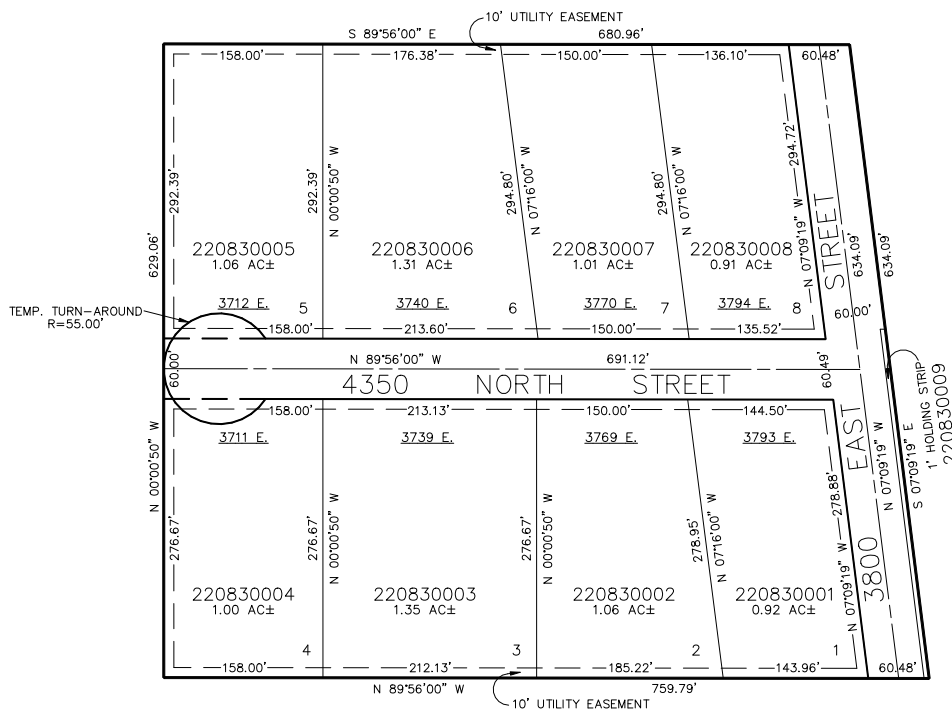
PART OF THE S.E. 1/4 OF SECTION 17, T.7N., R.1E., S.L.B. & M.
NORTH FORK ESTATES

IN WEBER COUNTY

TAXING UNIT: 36

SCALE 1" = 100'

SEE PAGE 7



SEE PAGE 10

FOR COMPLETE ENG DATA SEE
ORIGINAL DEDICATION PLAT IN
BOOK 23, PAGE 56 OF RECORDS.